

THE WESTVIEW GOLD TONE

VOLUME 4, ISSUE 1

AUGUST 2005

FROM THE DIRECTOR

JERI WEBB

Welcome back Gold!!! I hope that everyone has had a relaxing and energizing summer. Our family had a great time hiking waterfalls in Washington, riding a jet boat and catching some white water rapids in a canoe. We're ready to get going again and to have a wonderful year with the gold.



Practice correctly - daily

1. *practice less material, but practice it more*

a. *select small segments of music and try to polish those small segments*

b. *practice slowly first*

c. *take those small segments and play them at a tempo that you will be able to play them perfectly. Once comfortable, gradually get faster. Before you know it - you will reach your goal.*

d. *Try to stay ahead of schedule, but if you should fall behind - communicate to the director or your section leader, so that you may be granted an extension if you have been working up to your ability.*

Parents - remind your child to practice - once they get started they will enjoy themselves (if they are practicing correctly). Your job is to get them started.

We have a wonderful camp planned with quality coaches - both marching and instrumental. The leadership has been busy preparing for a great time for all. In addition to our normal camp activities we are going to attend a show at Moonlight Theater on Friday and have a pool party on Monday.

I'd like to share with you some tips on how to set and achieve your student's goals for this year and avoid the stress that can come with procrastination. All students will need to memorize about ten minutes worth of music between our field show, fight song and March. For many this is a new challenge and the approach to meeting this challenge is important.

BIG NEWS

- ▶ MARCHING BAND CAMP—AUGUST 15TH—23RD
- ♪ MOONLIGHT MUSICAL THEATER TRIP—AUGUST 19
- ♪ POTLUCK & PERFORMANCE—AUGUST 23
- ▶ BOOSTER BOARD MTG—SEPT 7
- ▶ POWAY DAYS PARADE—SEPT 10
- ▶ WESTVIEW REVIEW TOURNAMENT—OCT 15 COME VOLUNTEER AND JOIN THE FUN !

WELCOME FROM THE BAND PRESIDENT

Jenny Ward

Hi, this is Jenny Ward, Westview's 2005-2006 band president! In case you don't know me, I am going to be a senior this year at Westview and have been in Westview's marching band for three years now. I am one of the clarinet section leaders and band captains for this year and my favorite kind of ice cream is raspberry sherbet. And now that I've introduced myself, I would just like to say that I'm really excited for the upcoming year and I know it will be a fun and memorable last one for me.

I would also like to welcome all new band members, and I look forward to meeting and working with you all. Westview's music program is a rewarding one, and well worth your time. You won't be disappointed! For all returning students, I'm so glad that you have chosen to stay in the program and hope that this year will be even better than the last.

Watching this program mature from a small unknown parade band into a full fledged 6A marching band has been a rare and unique opportunity, and the tremendous growth that has occurred over just three short years is astounding. I am extremely excited to have the privilege of representing our band's students, and will do my best to keep our music program at its best! I hope the remainder of your summer is relaxing and safe, and I'll see you at band camp!

Inside this Issue:

Message from Board President	2
Color Guard News	3
MB 101	4 & 5
Fair Share Info	6
Taste Test	7
Westview Shout-Out	7
Washington D.C.	8
Section Parents	9
Student Accounts	11
Who's Who	12
Calendar	

MESSAGE FROM YOUR BOOSTER PRESIDENT

Jennifer Wilson

COMMUNICATION IS THE KEY

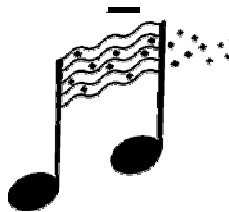
It's hard to believe that we are starting year four of Westview and the ever-growing instrumental music program. The numbers in our marching band/color guard/orchestra have more than quadrupled since opening day. All of our groups garnered Unanimous Superior ratings during last year's festival concert season - indeed, we are all so proud of our students and all they've accomplished and will continue to accomplish this year.

As we grow, things naturally become more complicated, but through consistent and accurate communication, these complications can be dealt with. As a Booster Board, we've made it our **top priority** this year to enhance our communications with the parents and the students involved in the Westview Gold. Our goal this year is "no surprises" (well, how about "few surprises"?) How are we going to do this?

Heading the charge is VP of Communications and Newsletter Editor **Kathy Gima** who will continue to produce a top-notch, **informative newsletter** every six weeks or so. New this year, we will be **mailing the newsletter** to all enrolled Westview Gold students and their families. While we aspire to a paperless world, there is no replacing receiving a newsletter in the mail.

You can also expect to receive **periodic e-mails** from our Westview Gold Booster Yahoo group. If you are not receiving these e-mails, please contact me ASAP at gwilson7@san.rr.com. Our Booster Web Master, **Stan Skoglund** is working to enhance our **website**. Look for a roll out of the new site soon!

You've probably already received the **photo calendar** prepared by **Karlene Blackburn**. Thanks to her hard work, you now have a handy reference to all of the Westview Gold events for the upcoming year (at least as we know them to be at this time!)



Another crucial communication tool is **Learning Point**. Miss Webb posts assignments, announcements and documents on this website. You can access it by going to www.learningpoint.org, and entering your user name and password (your student will know how to help you with this!)

We've also added to our communication repertoire **Section Parents**. One or two parents from each instrument section have stepped forward to be the "go to" folks for you. They should be the first boosters you go to if you have a question. If they cannot answer it, they will know where to go to get the information. (For more on Section Parents, see the article on page 9 of this newsletter.)

Finally, we will be holding **Booster parent meetings** on the third Wednesday evening in the months of September, November, January, March & May. Also, we have **Booster Board meetings** the first Wednesday evening of every month - and everyone is welcome to attend. We promise the parent meetings will be information packed and we'll even try to make them enjoyable. For sure, they will be well worth your time and we encourage all parents to attend. As I stated earlier in this article, Westview Gold is growing and the only way we can keep up the momentum is with your help - **WE NEED YOU TO MAKE THIS YEAR A SUCCESS.**

So, communication is the key, and we promise to keep you well informed throughout the year. On your part, we ask that you volunteer freely at our events and activities. I promise that you will not regret it. It's going to be a great year!



GOLD, HARD CASH—A NOTE FROM YOUR TREASURER

Joseph Taulane

Most of us would like to have a pocket full of cash. However, as Booster Treasurer, I hope you will keep your cash and use only checks or money orders to make your various contributions to the music program such as fairshare donations and deposits for trips. By using checks you have a receipt with your cancelled check. If your check is lost, and we had a few disappear last year, (some were later found in the bottom of backpacks) you can stop payment and replace the check. There is no recourse for missing cash. So please, **don't send cash**. We do not have a person in

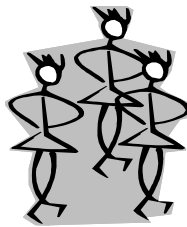


the bandroom who can accept cash from your student and provide a receipt. Your students will be involved in some fund raising events where they will have received money from the sales of items like flowers and Entertainment Books. For these events, we will try to arrange a time when the money can be turned in to a Booster parent. For all the rest, please send checks and please be certain to **PRINT** your student's name on the memo section of the check. Feel free to contact me by email at jtaulane@ucsd.edu if you have any questions or concerns.

COLOR GUARD NEWS

Diane B. Smith

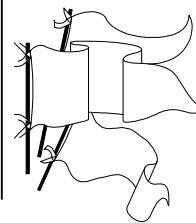
Our Westview Color Guard team is excited and ready for another fun and work filled year. They have been meeting all summer running and cross training to be ready for the vigorous new field show. The Guard will have many new faces this year. We look forward to seeing their progress and enjoying their success in rebuilding a fairly new team. We are happy to have returning coaches **Christopher Dye** and **Angela Woodard**. The team captains are **Alisha Peterson**, **Laura Smith**, and **Alana Pennington**. They will enthusiastically lead our team this year!



alone. With such a small team, it takes **EVERONE** of us to contribute to the success of the group. Not only has your child joined an awesome team, but you as the parent are a major part of this team. It's a wonderful group to be a part of! We will need flag makers (from cutting to ironing to sewing), chaperones, drivers, fundraising, etc. The biggest project upcoming is the flag making which will probably begin right away. The more hands we get involved with this task, we will be able to accomplish it quicker and easier! Please plan on helping out with this task. Details are soon to come.

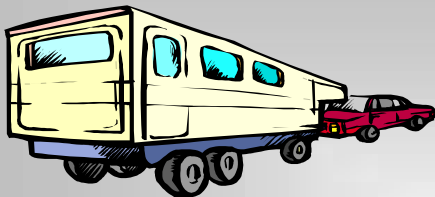
With the beginning of a new year and many new parents as well as team members, we need to stress the importance of parent support. Our program cannot run without the support of our parents!! Our parent booster leaders this year are as follows...(returning) **Laura Peterson** as President, (returning) **Natalie Endozo** as Vice President, (returning) **Andy Pennington** as Treasurer, and **Diane Smith** as Secretary. We are very fortunate to have these parents who work very hard making sure our kids have everything they need!! They cannot do it

Please plan on being your student's biggest fan this year. It's going to be a great year. Our support will make it the best it can be! There will be bumps in the road to overcome, but let's work through them together and show our support for our Westview Color Guard Team and our coaches. We are looking forward to a fantastic year!!!



WESTVIEW GOLD GRACIOUSLY ACCEPTS TWO SUBSTANTIAL DONATIONS

Jennifer Wilson



This past year, Westview Gold was the proud recipient of the donation of two significant pieces of equipment for our program. First, through the generosity of **William and Paula Engelbrecht**, parents of 10th grade trumpet player **Anthony**, we now own a beautiful brand spanking new 20-foot trailer in which to transport our marching band and color guard equipment! (We do need a parent with a truck to haul the trailer to our field show competitions - let Equipment Manager **Kenny Grames** know if you can volunteer at 538-1444). A heartfelt **THANK YOU** to **Anthony's** family for this significant gift.

We also received funds for the purchase of a parade banner from a donor who wishes to remain anonymous. As any of you know who have been to our parade performances, the one thing we lacked was the polish of a beautiful banner proudly proclaiming "WESTVIEW". Well, now we'll have such a banner thanks to this generous gift. Although we cannot thank you by name, *please accept our sincere gratitude.*



The Westview Gold is a part of the Westview Foundation, a not-for-profit organization recognized as tax-exempt pursuant to section 501 (c)(3) of the IRS code. Your gifts to Westview Gold may be tax deductible and we would certainly benefit from your generosity. Please think of Westview Gold when you make your charitable contributions.

PARENTS! STUDENTS! MARCHING BAND FACTS 101:**Sue Downs****WHAT YOU NEED TO KNOW...**

Were you in a high school marching band 20 or 30 years ago? Well, times have changed. Marching bands of today are more technical, more advanced and run like a well oiled machine. They march in parades, perform at football games and compete in tournaments. Say goodbye to life as you know it from now until Thanksgiving...but you'll have the ride of your life! Westview Gold is a marching band of the new millennium!

**LESSON 1: FACTS ABOUT UNIFORMS**

Marching Uniforms: Two piece black uniform worn in performances. These uniforms will never go home with the students. Students will be instructed to change into these uniforms in the band room (hence the need for close fitting shorts/t-shirt) OR the uniforms will be put on a truck, taken to the event where the students will change into them in the parking lot. No eating while in uniform. The uniforms are dry cleaned several times during the marching season, but refer to the uniform care sheet received at the uniform fitting for the proper care of the uniform.

Dinkles: Black marching shoes you purchased at the uniform fitting. Up until this year, the shoes purchased were the "Dinkle" brand. This year, another brand of shoes were purchased, but the shoes will still probably get referred to as Dinkles.

Shako: Marching band hat with a feather plume. As you know from the uniform fitting, the students are instructed not to touch the shiny brim of the shako. They will also never touch the plumes. Uniform moms will wear white gloves and insert the plumes into the shakos prior to an event. The plumes will be removed by the white gloved moms after the event. This will keep the plumes in great shape for many years. And no, we aren't weird....all other marching bands do this too.

Travel Uniforms: Med. Tan /khaki pants and shorts (provide your own), black polo shirt (the one you ordered over the summer), and either Dinkles (black marching shoes) with black socks OR white gym shoes with white socks. You'll be told which shoes/socks to wear prior to the event.

Rehearsal Uniforms: For the Monday and Wednesday night rehearsals, wear all black: Black pants or sweats, black long sleeve shirt or jacket, black socks and Dinkles.

LESSON 2: STUDENT LIFE

Student Handbook / Instrumental Music Manual: This manual has all the rules and regulations of participating in the Music program at Westview. It is available on the band website for reference/printing and will be distributed on the first day of school.

The "White Box": This box is mounted on the wall in the band room near the offices. Students will deposit permission slips, fair share payments, etc in this box. There are usually envelopes located next to the box for your use.

Student Accounts: Each student has an account that is maintained by the Treasurer and Student Account officer of the Band Boosters. When a student participates in a fundraiser and earns money, the money is deposited into that student's account to be used for fair share or for expenses associated with trips. A summary of the student accounts is posted near the White Box. Only students with money in their accounts will be printed on the summary. If the money in the account is not used by the student prior to graduating, the money will be deposited into the Band-Booster account.

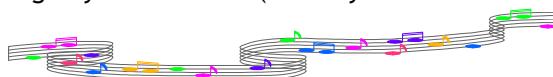
Fair Share Donation: See accompanying article in this newsletter—page 6.

Learning Point: You will go to this web site often!!! www.learningpoint.org By entering your user name and password, you can get to all your teachers' sites to keep current on assignments, announcements, and documents.

Practice Logs: Weekly practice logs are turned in every Tuesday in the box on the table by the offices (not the White Box) You will print the practice logs off of the Learning Point web site. The chart at the bottom of the practice log will show you how to earn the best grade for your practicing efforts.

On time/Late: If you're on time, you're late! Be EARLY to everything!

Lockers: Lockers in the band room will be assigned to the students for use of their band instruments and backpacks. A lock can be purchased at band camp. Do not bring in your own lock (unless you are a returning student and have your lock you purchased from us last year).



(cont. on page 5)

PARENTS! STUDENTS! MARCHING BAND FACTS 101: WHAT YOU NEED TO KNOW... (CONT. FROM PAGE 4)

Sue Downs

LESSON 2: STUDENT LIFE (cont.)

Student Leaders: See the Instrumental Music Handbook for a complete description on all the opportunities for students to assume leadership roles. Some of the positions are elected and some are appointed. The student leadership is broken down into 4 categories: Performance/Rehearsal Leaders, Section Leaders, Administrative Leaders and VP's

Section Coaches: Part time, paid staff members/professional musicians that coach the individual sections on music and marching technique

Lettering: Band students can earn a letter for participating in band and by participating in a variety of other band related events. Refer to the Student Handbook / Instrumental Music Manual for complete details !

LESSON 3: TOURNAMENTS, PARADES, PERFORMANCES

SCBOA Festival: Southern California Band Organization of America

Parade Block: Westview will perform in 2 types of parades: those that do not get judged (Poway Days Parade) and those that do (Mt. Carmel Tournament, Mira Mesa Tournament). All students will be required to perform in the non-judged parades. Only those students who audition and are accepted into Parade Block will march in the judged parades. Information on Parade Block auditions will be available when school starts

Color Guard: Non-instrumental marching band students who play a vital role in adding color, drama and technique to the marching band performance. Usually 20-30 students who audition in the spring and practice all summer to perfect techniques in flags, rifle and dance. Color Guard makes all their own flags and designs costumes which complement the music selection for the field show/tournaments.

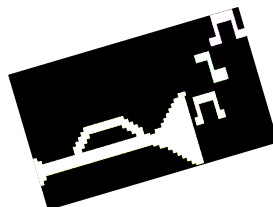


Field Show: Performed at half time at home football games. Because of the intricate footwork and challenging music of today's marching bands, only one field show is selected and rehearsed for the whole football season, but you will see it improve and get more involved each week. This is also the same show that will be performed at tournaments. Do not expect John Phillip Sousa music. The music in today's field shows have several movements and a lot of drama. This year's selection in an original score titled: "Music of the Day" and you can listen to it by going to www.keypoulan.com

Tournaments: A tournament is a field show with judges and no football game. Westview will compete in several tournaments throughout the season. Any tournament scheduled for the first 2 weeks in October are practice tournaments. They are judged, but trophies are not given. Tournaments are hosted by high schools and can have as many as 20+ schools competing on one day. Some tournaments are by invitation only and others are open to all. Based on the number of students in the band, the bands are assigned a level and, to be fair, will be judged against other schools of that same level. The judges will be located in the press box and they will judge on several areas: uniforms, marching, sound. You may see or hear the judges talking into tape recorders. Points are assigned to each area, the points are added up and trophies are awarded at an awards ceremony following the tournament. The drum major and selected members represent each school at the awards ceremony. Each group has prepared a unique "salute" which they perform when their school is announced. This part is very fun to watch! Westview has the privilege of hosting "The Westview Review" on October 15. This will be a big, all day tournament. This is also the parents' day to shine as a representative of Westview Gold. We ask each parent to sign up to help on that day even if only for 2 hours. Sign up soon so that you get first choice!

Tournament Etiquette: The audience is requested not to talk or move to/from their seats during a performance. Also, bands will be seated on the "Visitors' side of the stadium and the audience will be seated on the "Home" side of the stadium. You will not sit with your band student (this is done to maintain order during the tournament, not because your student does not want to sit with you!)

We hope that you found this fun and informative. Hope to see you out there during this music season !



FAIR SHARE DONATIONS—WE CAN'T DO IT WITHOUT THEM**Jennifer Wilson**

At the end of the school year, your student brought home a letter announcing the Fair Share Donation amounts and payment dates for the coming year. As we explained, the purpose of Fair Share Donations is to “cover the financial gap” between what the school district provides and what it really takes to run our program. While we are fortunate at Westview to have an administration and district that are supportive of the arts and provide basic resources, high school instrument programs have a tremendous number of operational needs that are not covered completely by the district funds. Our wonderful school district does what it can to equitably fund all programs, but we must find ways to make up the difference. This year, that cost for the Westview Gold programs is approximately \$100,000.

Each family in the Westview Gold is requested to make tax-deductible fair share donations to our program **in the amounts and by the dates below.**

Westview is not unique in its request for fair share donations. All four of Poway's high school music programs depend on the collection of fair share donations (called “assessments” at some of the other schools) to fund their programs. Even though Westview is a new program and has many start-up costs, **our requested fair share donation amount is the same or similar to the amounts assessed by the other Poway high schools.**

Your fair share donation is but one vital component to the success of our program. To ensure that the Westview Gold attains all that it can be, families will need to contribute time, effort and, yes, money. We understand that all three of these personal resources are in short supply with our busy lives, but these contributions are all worth it as this outstanding group of students continues to grow and improve.

2005 - 2006 Fair Share Costs and Payment Dates

Please make the following minimum donation amounts by the following dates - Make checks payable to “Westview Foundation” and deposit in the “white box” in the music room.

Marching Band/Color Guard Students:

- a. Total Fair Share Cost per student is \$300.00 for the Marching Season (Term 1)

\$150.00 Due **September 15, 2005**

\$150.00 Due **October 15, 2005**

- b. Total Fair Share Cost for the Concert Season is \$150.00 (Band students only - Term 2)

\$150.00 Due **December 1, 2005**

Instrumental Ensemble Students:

Total Fair Share Cost per student for the Year: \$200.00

\$100.00 Due **September 15, 2005**

\$100.00 Due **October 15, 2005**

Orchestra Students:

Total Fair Share Cost per student for the Year: \$200.00

\$100.00 Due **September 15, 2005**

\$100.00 Due **October 15, 2005**

If you have any questions about the Fair Share Costs of your student or if there is a financial need, please contact Jennifer Wilson, Booster President at gwilson7@san.rr.com or (858) 484-1122 or Joseph Taulane, Booster Treasurer at jpt@chem.ucsd.edu. Our goal is to make our program the best it can be, but to do that, we need your help.

YUM, YUM—PARTICIPATE IN A TASTE TEST !

Jennifer Wilson

Dear Westview Gold Parents,

To help raise money for our band program at Westview, we are planning on participating in Jack in the Box Taste Tests.

What is a Jack in the Box Taste Test?

Participants will test many types of foods. A typical taste test will take about an hour...some shorter, some longer. This includes check-in, instructions, tasting food, and answering a survey. The tests usually take place Tuesday, Wednesday, or Thursday at lunch (11-2) and/or dinner (5-8).

Who Can Participate in a Jack in the Box Taste Test?

Any person aged 18-54 years old and able to fluently read and write in English. If you have food allergies or dislike any of the foods that Jack in the Box usually sells, you would not be able to participate.

How Does Westview Gold Benefit?

Less Than 75 Participants	= \$0
75-99 Participants	= \$3,000
100-120 Participants	= Additional \$1,000, total \$4,000

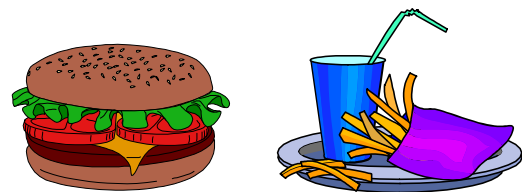
How Can YOU Help?

When we get our dates, (we usually get 3 weeks notice), from Jack in the Box for the taste tests we will need the following:

11:00AM	=	30 participants
12:00PM	=	30 participants
1:00PM	=	30 participants
2:00PM	=	30 participants

for a total of 120 participants per session. Our first opportunity to participate in this taste test may not be until 3 months from now.

We hope to have a huge turn-out to fill all of the time slots ! Stay tuned for the dates !



A SPECIAL WESTVIEW SHOUT OUT TO:

- ♪ We are SEW happy to give THANKS to Kathy Lee & her daughters Tarina, Dana & Shannon for their endless patience and time to fit and alter all of the uniforms for the students.
- ♪ A grocery cart full of kudos to Laura Scheid, Anita Grames & Michelle Fennell for ensuring that the students have a good meal & snacks during band camp. Additional kudos to all the Parent Volunteers who give up their time to staff the food and snack tables!
- ♪ A Gold medal to Belle Chu for keeping track of all the band camp registrations and Will Rogers Moonlight show tickets. Her tireless efforts keep these events running smoothly !
- ♪ A Westview Gold Welcome to Annette Wheelock & Stan Skoglund who have stepped forward to fill the VP for Volunteers & Webmaster positions, respectively. We appreciate your selfless donation of time and effort towards enhancing the music program !



HEY BUDDY—DO ‘YA DRIVE A TRUCK ?**Joseph Taulane**

Many of us that own trucks find that we have more “friends” than we would if all we drove was a sedan. I have about 200 students and a bunch of parents that are ready to be your friends, and all you need to do is a little driving. I’ll even buy the fuel. And we will wash your truck for free at any of our band car wash events. Such a Deal!

The Marching Band, the Color Guard, the Boosters, Miss Webb, and the “BAND DADS” need your help. We have a brand new 20 ft. trailer which we will use to transport uniforms and equipment for our marching band performances. We must find a few families in the program that have a truck or SUV that would be willing to tow the trailer. The trailer has dual axles, electric brakes, and comes wired with a universal 7 pin round connector. The curb weight is about 3000 pounds. The trailer is owned and insured by the Poway Unified School District. If you have a 1999 or newer truck, it should be pre-wired for this system. All you need is a tow bar receiver and we are good to go. Please check your dates and see if you can help us.

The schedule is:

10/1 – Poway	10/29 – MCHS
11/5 - Mira Mesa	11/19 – Arcadia/Moorpark

If you can help please contact our VP of Volunteers, Annette Wheelock at annettejjw@aol.com , 484-2037 or me, Joseph Taulane at jtaulane@ucsd.edu, 484-8813. Don’t wait for the other guy to do it, call now!

**SECTION PARENTS & LIAISONS—THE “GO-TO” PEOPLE****Jennifer Wilson**

Over the past three years, the parent liaisons to the orchestra, instrumental ensemble and color guard have provided an invaluable communication and planning link with the parents. Using the liaisons as a model, this summer the Booster Board recruited parents from each of the instrument sections in the Marching Band to perform a similar communication and planning function. These Section Parents will be the “go to” folks - they will be able to answer your questions or, at least, point you in the right direction.

Please welcome our Section Parents and Liaisons for the coming year! (Feel free to call them and introduce yourself).

Marching Band Sections:

Flutes: Anita Grames (538-1444)
Cherilyn Browne (538-0207)

Clarinets: Judith Garces (538-6356)
Janet Pitcher (780-1757)

Trombones: Cathleen Sugarman (538-4995)

Trumpets: Lori Hill (484-3568)

Low Brass (Tubas, French Horns, Baritones/Euphoniums): Cathy Merrow (484-0864)

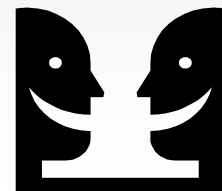
Saxophones: Kathy Gima (538-9029)

Percussion: Laurie Horne (756-8933)
Sue Downs (484-4204)

Color Guard Liaison: Laura Peterson (484-09380)

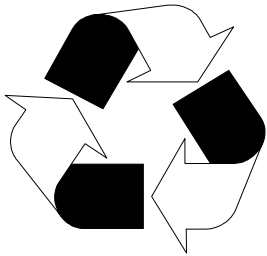
Orchestra Liaisons: James and Paula Earnest (538-4036)

Instrumental Ensemble Liaison: Gloria Lew (538-8990)



RECYCLING MAKES MONEY AND SENSE TOO !

Jane Colombino



We now have a new (and almost painless!) way to raise much-needed funds for our Instrumental Music programs. We're collecting empty laser, toner and inkjet cartridges and used cell phones for recycling. The eScrip Recycling program will pay us cash for each phone or cartridge collected. Most of the major brands (HP, Canon, Sharp, Lexmark, Nokia, Motorola, Ericsson, etc.) are accepted. Go to: http://recycling.groups.escip.com?cartridge_list.asp?gid=152618332

Thanks to all of you who are turning in ink and toner cartridges and cell phones for recycling. Please keep saving your empty cartridges and old phones. There will be a recycling bin near the front door at 13295 Bavarian Drive (Mesa Verde MS area) if you have anything you'd like to donate over the summer. And we'd still like to recruit employers who would be willing to use our labels for their recycling. For more information, please contact Jane Colombino at (858) 538-7734 or at RColombino@msn.com.

STUDENT ACCOUNTS

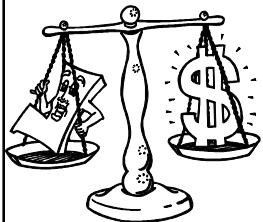
Gail Wakabayashi

The Student Account list has been posted on the wall above the "White Box" in the Band Room. Only students with positive accounts are listed. The money in their individual accounts show balances from previous years in Westview Gold as well as from our first three fundraising events this school year which were Discount Cards, Entertainment Books and Poinsettia Sales.

"Student Accounts" provides each student an opportunity to earn funds to help defray musical expenses such as Fair Share Donations, uniforms (shirt, marching shoes, etc.), music lessons, music supplies, and banquet fees to name a few.

Fundraising activities are announced and a certain pre-determined percentage (decided by the Westview Gold Board Members) can be earned by the student and deposited into their account. The amount earned is accumulated for the duration of each student's academic career while in the Westview Gold program (marching band, concert band, orchestra, instrumental ensemble, color/winter guard).

In order for a student to withdraw funds from his/her Student Account, the student must completely fill out a Student Withdrawal Request Form which is located on the Westview Gold website. Only music-related expenses will be approved. All Fair Share Donations and other financial obligations must be taken care of prior to requesting funds for optional items. Required approval signatures include Parent/Guardian, Miss Webb, and the Band Booster Treasurer.



For any questions, please contact Gail Wakabayashi at (858) 538-4516 or at gail.wakabayashi@baesystems.com

THANK YOU TO ALL OUR VOLUNTEERS !!

TOGETHER, WE'RE BUILDING THE FUTURE !!

NO EFFORT (ALMOST) FUNDRAISING

Albertson's has a Community Partners Program where they will give Westview Gold a percentage of what you spend at Albertson's. To register, sign up for a Preferred Savings Card from Albertson's. After you have your card, do the following:

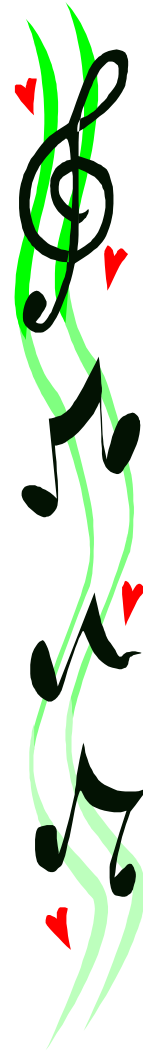
- 1) Go to www.Albertsons.com.
- 2) Click "in the Community".
- 3) Click "Community Partners".
- 4) Click "Shoppers: login or register with your Preferred Savings Card first".
- 5) Enter card # and phone #.
- 6) Click "find a Partner".
- 7) Name = Westview; city = San Diego; state = California.
- 8) Select the pop-up match of "Westview Gold Boosters" and add.

So, let's all register and help Westview Gold grow as we shop at Alberson's !



Who's Who

Director	Jeri Webb	780-2000 X3262
Asst Director	Lilly Lazzari	
Coaching Staff	(All area codes 858 unless noted)	
Flute	Marion Fredrickson	638-0135
Clarinet	Robert Carter	(760) 635-3425
	Robert Ramsey	538-0366
Saxophone	Sam Williams	(760) 746-6299
French Horn	Alan Grant	487-7746
Trumpet	Andrew Compton	(760) 745-2996
Trombone	Jim Prindle	278-8206
Low Brass	Scott Sutherland	(818)434-1596
Percussion	Michael Atesalp	(619) 318-DRUM
Percussion	Tollak Rafto	(760) 703-5910
Orchestra	Alyze Dreilling-Hammer	592-9790
	Lorie Kirkell	453-3338
	Joe McNally	(760) 632-6829
Marching	Geoff Radant	
	Jillian Rusk	
	Adam Wolf	
	Jason de la Cuadra	
Color Guard	Chris Dye	
	Angela Woodard	
Booster Team		
President	Jennifer Wilson	484-1122
Co VP Events & Activities	Laura Scheid	538-0376
Co VP Events & Activities	Michelle Fennell	538-5530
VP Ways & Means	Bill Englebrecht	679-7595
VP Volunteers	Annette Wheelock	484-2037
VP Communications	Kathy Gima	538-9029
Recording Sec.	Sue Downs	484-4204
Corresponding Sec.	Chris Meike	484-4420
Treasurer	Joseph Taulane	484-8813
Student Accounts	Gail Wakabayashi	538-4516
Color Guard Liason	Laura Peterson	484-0938
Orchestra Liason	James & Paula Earnest	538-4036
Instrumental Ensemble	Gloria Lew	484-1693
Historian	Colleen Salzetti	538-9096
Parliamentarian	Cathy Merrow	484-0864
Booster Membership	Jane Colombino	538-7734
Uniform Manager	Kathy Lee	538-0622
Fall Field Tournament	Cathy Merrow	484-0864
Solo & Ensemble Festival	Sue Downs	484-4204
Band Camp	Anita Games	538-1444
	Belle Chu	538-9488
	Laura Scheid	538-0376
	Michelle Fennell	538-5530
Newsletter	Kathy Gima	538-9029
Restaurant Nights & Entertainment Books	Cindy Tentschert	672-1839
Chaperones	Laurie Horne-Wilborn	756-8933
Webmaster	Stan Skoglund	484-4599
E-mails	Jennifer Wilson	484-1122
Yearly Calendar	Karlene Blackburn	484-0154
Car Wash Coord	Nancy Ayers	538-5181
Poinsettia Sales	Michelle Arnett	484-1836
Equipment Manager	Kenny Games	538-1444



Do you have any questions or topics that you would like to be addressed in future issues ? Please send me an email at rgima@san.rr.com or call Kathy Gima at (858) 538-9029.

I'll pass your request on to one of our excellent board members and publish the answers in a future newsletter.

THE WESTVIEW GOLD TONE

A PUBLICATION OF THE WESTVIEW INSTRUMENTAL
MUSIC BOOSTERS

WESTVIEW HIGH SCHOOL
13500 CAMINO DEL SUR
SAN DIEGO, CA 92129
(858) 780-2000

Important Dates

- August 15 (Monday)** — Leadership Training @ Band Room
- August 15—23** — Orientation, Auditions, Band Camp.
- August 19 (Friday)** - Moonlight Musical Theater Trip @ Vista. 6pm—11pm
- August 22 (Monday)** - Make-up Registration. 8am—Noon
- August 23 (Tuesday)** - Pot Luck & Performance. 6pm—Westview Plaza
- August 24 (Wednesday)** - Rehearsal. 6pm—9pm. Band Room
- August 25 (Thursday)** - First Day of School—Play at Assembly.
- August 31 (Wednesday)** - Rehearsal. 6pm—9pm. Band Room
- September 2 (Friday)** - Football game. 7:30pm. Westview Stadium.
- September 7 (Wednesday)** - Booster Board Meeting. 7pm—9pm. Band Room
- September 10 (Saturday)** - Poway Days Parade. 9am start. Poway.
- September 12 (Monday)** - Rehearsal. 6pm—9pm. Band Room.
- September 13 (Tuesday)** - Perform @ Back to School Night. 5pm—6pm. Band Room.
- September 14 (Wednesday)** - Rehearsal. 6pm—9pm. Band Room.
- September 15 (Thursday)** - 1st Fair Share Donation Due. White Box, Band Room.