

THE WESTVIEW GOLD TONE

VOLUME 5, ISSUE 1

SEPTEMBER 2006

FROM THE DIRECTOR

JERI WEBB

WELCOME (BACK) TO WESTVIEW GOLD!

We hope that everyone has had a restful and fun summer vacation. I know that I've been feeling like I need a vacation from my vacation. I spent a good portion of the summer with twenty-three of our students and nine of their family members. We joined the Southern California Music Ambassadors to perform in Europe - London, Paris, Austria, Switzerland, and Germany. We even managed to fit in a day trip to Venice, Italy as well as a jaunt to the Matterhorn (not Disneyland, but the Swiss Alps). Perhaps many of you will join us in two years when the next trip comes up. There is a strong love of live music in Europe and all of the concerts were well attended and received. It really gives the musicians a sense of being a Musical Ambassador.

Some exciting events have occurred during the summer. Miss Lazzari has been offered a full time job at Oak Valley Middle School. While she will not be returning to Westview, we know that she will remain a "GOLD" member nonetheless. We wish to congratulate her and the students of AP Music Theory. All of the test takers passed the test. It is well known



that the AP Music test is one of the most difficult AP tests (if not the most difficult). We are proud to say that Westview is the only school in our district to offer AP Music Theory.

Additionally, we had the good fortune to have inspirational speaker and leadership mentor Dr. Tim Lautzenheiser come to work with our leaders. The workshop was great and inspiring. We hope that we'll be able to have him return to work with our entire program.

We want to welcome Jim Rogers as our new low brass coach. Jim Rogers comes to us with many years of experience. A Grossmont HS graduate, he performed with the Blue Devils as a soloist as well as worked with the Santa Clara Vanguard. We are also very excited to welcome David Glyde as our field show composer. David writes for the Blue Devils as well as Logan High School. He is very excited about our show concepts.

I'm glad to "get back to work". What a great way to spend time - working with students, parents and staff members with a common goal - making great music.

BIG NEWS

- ▶ POWAY DAYS PARADE—SEPT 16
- ♪ REHEARSE-ATHON—SEPT 30
- ▶ WESTVIEW TOURNAMENT—OCT 07. COME VOLUNTEER AND JOIN THE FUN !
- ▶ POWAY TOURNAMENT—OCT 14
- ▶ MCHS TOURNAMENT—OCT 28
- ▶ MIRA MESA TOURNAMENT—NOV 04

STUDENT STANDOUTS—BOOSTER PRESIDENT'S AWARD



Congratulations to Joseph Taulane, Class of 2006, recipient of the first annual Booster President's Award. Joseph has been a member of the Westview Gold for four years, was a tireless volunteer and provided exemplary student support to the Boosters. Joseph was awarded a \$450 scholarship as a part of this recognition.

Inside this Issue:

Message from Board President	2
Salute to Seniors '06	3
MB 101	4 & 5
Fair Share Info	6
Volunteers & Seniors	7
Westview Shout-Out	7
Westview Review	8
Section Parents	9
Student Accounts	11
Who's Who	12
Calendar	

MESSAGE FROM YOUR BOOSTER PRESIDENT

Jennifer Wilson

COMMUNICATION IS THE KEY

It's hard to believe that we are starting year five of Westview and the ever-growing instrumental music program. The numbers in our marching band/color guard/orchestra have more than quadrupled since opening day. We are all so proud of our students and all they've accomplished and will continue to accomplish this year.

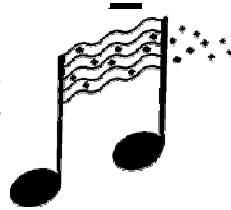
As we grow, things naturally become more complicated, but through consistent and accurate communication, these complications can be dealt with. We're continuing to make communications our **top priority** to provide key information to the parents and the students involved in the Westview Gold.

Heading the charge is VP of Communications and Newsletter Editor **Kathy Gima** who will continue to produce a top-notch, **informative newsletter** every ten weeks or so.

You can also expect to receive "**The Week Ahead**" e-mails from our Westview Gold Booster Yahoo group. If you are not receiving these e-mails, please contact me ASAP at gwilson7@san.rr.com. Our Booster Web Master, **Stan Skoglund** has built a fantastic website. Please visit it often at www.westviewgold.org

You will be receiving the **photo calendar** prepared by **Karlene Blackburn**. Thanks to her hard work, you will have a handy reference to all of the Westview Gold events for the upcoming year (at least as we know them to be at this time!)

Another crucial communication tool is **Learning Point**. Miss Webb posts assignments, announcements and docu-



ments on this website. You can access it by going to www.learningpoint.org, and entering your user name and password (your student will know how to help you with this!)

We've also added to our communication repertoire **Section Parents**. One or two parents from each instrument section have stepped forward to be the "go to" folks for you. They should be the first boosters you go to if you have a question. If they cannot answer it, they will know where to go to get the information. (For more on Section Parents, see the article on page 9 of this newsletter.)

Finally, we will be holding **Booster parent meetings** on the following dates: Sept 20, Oct 18, Nov 15, Jan 17, March 21, April 25 & May 16. Also, we have **Booster Board meetings** the first Wednesday evening of every month - and everyone is welcome to attend. We promise the parent meetings will be information packed and we'll even try to make them enjoyable. They will be well worth your time and we encourage all parents to attend.

As I stated earlier in this article, Westview Gold is growing and the only way we can keep up the momentum is with your help - **WE NEED YOU TO MAKE THIS YEAR A SUCCESS**. (You'll also earn volunteer hours when you attend a Booster meeting !)

So, communication is the key, and we promise to keep you well informed throughout the year. On your part, we ask that you volunteer freely at our events and activities. I promise that you will not regret it. It's going to be a great year!

COLD, HARD CHECKS—A NOTE FROM YOUR TREASURERS

Joseph & Fran Taulane

Most of us would like to have a pocket full of cash. However, as Booster Treasurers, we hope you will keep your cash and use only checks or money orders to make your various contributions to the music program such as fair share donations and deposits for trips.

As your treasurers, we will process over one thousand checks next year for all the different elements of the Program. **WE NEED YOUR HELP!** **First, please do not mix items on checks.** We are a large program and process over \$100,000 each year. To do this, different volunteers process different events. So, PLEASE write separate checks for each thing. For example, don't combine your "band camp" donation with a "fair share assessment".

Second, on each check, PRINT the name of your student and note what the check is for. This will insure that



proper credit is applied towards your student.

Third, and last, if you have questions or want to confirm the status of a fiscal item, contact me by email at jtaulane@ucsd.edu.

You may include a stamped, self-addressed postcard in the sealed envelope with your check.

When I collect your check from the "white box", we will send the post card to you. This will serve as an acknowledgement that your check was received. These are not receipts for tax purposes, just a note that the check is not still in the bottom of your student's backpack.

We have no way to personally accept cash payments and issue receipts. **NO CASH—CHECKS ONLY PLEASE.**

Thanks for your support of the Westview Gold Music Program.

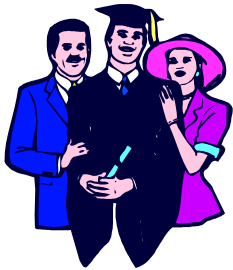
SALUTE TO OUR 2006 SENIORS & THEIR FAMILIES

Jennifer Wilson

What a fantastic community of Boosters we have at the Westview Gold. Whether Team Members, Committee Chairs or Parent Volunteers, you parents were always there with enthusiasm and a keen interest to assist all of our students, directors and coaches achieve amazing things.

A few of our community members have graduating seniors and, so, are leaving our day-to-day activities. They were the founders of the Boosters and we have them to thank for building the Westview Gold to what it is today.

THANK YOU **Kathy Lee** for managing uniforms for four years. THANK YOU **Gail Wakabayashi** for setting up our student accounts



system. THANK YOU **Susan Chyou** for your outstanding work with the Orchestra. THANK YOU **Jane Colombino** for Chairing Booster Membership and establishing the recycling fundraiser program. THANK YOU **Michelle Fennell** for your work on the Booster Team, and always being there as the “personal assistant” to the Drum Major.



THANK YOU **Kevin Fennell** and **Fred Goosens** for helping establish the BAND DADS! THANK YOU **Ron and Colleen Salzetti** for recording our first four years in both DVDs and scrapbooks.

A few others have graduating seniors, but, lucky for us, they still have students in the program. THANK YOU **Joseph and Fran Taulane** for the countless hours you spent setting up our budget and financial tracking systems (and agreeing to do it next year!) and **Joseph** for being the grand poobah of the Band Dads. THANK YOU **Laura Peterson** for leading the Color Guard Boosters for four years and counting!

THANK YOU to the families of the graduating seniors: the **Adrianos, the Bustamantes, the Chyous, the Colombinos, the Fennells, the Gibsons, the Goosens, the Gordons, the Grills, the Haths, the Horwitzs, the Lees, the Lius, the Lopezs, the Manis, the Petersons, the Salzettis, the Shahs, the Smiths, the Sobotkas, the Taulanes, the Underwoods, the Villafanias, the Wakabayashis, the Wards, the Wights, the Wilsons, the Yeos and the Yoons**. You are amazing volunteers and we are so very lucky that you are a part of the Westview Gold Community.

CALLING ALL WESTVIEW GOLD VOLUNTEERS

Jay Tillson

Each family is required to volunteer their time during the school year. New this year is an option to “buy out” some of the required volunteer hours for those families who so desire or cannot make this time commitment.

Volunteer Fair Share Contributions:

- Mandatory 10 hours per student family for the Fall Tournament
- Additional volunteer hours as follows:
 - ♪ Marching Band: 30 hours per family/\$200 buy-out
 - ♪ Color Guard 15 hours per family/\$100 buy-out
 - ♪ Orchestra 15 hours per family/\$100 buy-out
 - ♪ Instrumental Ensemble 15 hours per family/\$100 buy-out



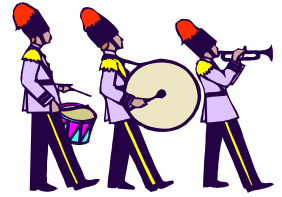
Please consider chairing or participating on some of the various committees and events during the year. See the article—Volunteers & Seniors 2006 - page 7.

The Westview Gold Boosters team recognizes that time and money resources are in short supply in our busy lives, but please note that our requested Fair Share Contribution is similar or smaller than the amounts requested by the other Poway high schools. Your generous contributions to this program are greatly appreciated.

PARENTS! STUDENTS! MARCHING BAND FACTS 101: WHAT YOU NEED TO KNOW...

Sue Downs

Were you in a high school marching band 20 or 30 years ago? Well, times have changed. Marching bands of today are more technical, more advanced and run like a well oiled machine. They march in parades, perform at football games and compete in tournaments. Say goodbye to life as you know it from now until Thanksgiving...but you'll have the ride of your life! Westview Gold is a marching band of the new millennium!



LESSON 1: FACTS ABOUT UNIFORMS

Marching Uniforms: Two piece black uniform worn in performances. These uniforms will never go home with the students. Students will be instructed to change into these uniforms in the band room (hence the need for close fitting shorts/t-shirt) OR the uniforms will be put on a truck, taken to the event where the students will change into them in the parking lot. No eating while in uniform. The uniforms are dry cleaned several times during the marching season, but refer to the uniform care sheet received at the uniform fitting for the proper care of the uniform.

Dinkles: Black marching shoes you purchased at the uniform fitting. Up until this year, the shoes purchased were the "Dinkle" brand. This year, another brand of shoes were purchased, but the shoes will still probably get referred to as Dinkles.

Shako: Marching band hat with a feather plume. As you know from the uniform fitting, the students are instructed not to touch the shiny brim of the shako. They will also never touch the plumes. Uniform moms will wear white gloves and insert the plumes into the shakos prior to an event. The plumes will be removed by the white gloved moms after the event. This will keep the plumes in great shape for many years. And no, we aren't weird....all other marching bands do this too.

Travel Uniforms: Med. Tan /khaki pants and shorts (purchased from Educational Outfitters), black polo shirt (the one you ordered over the summer), and either Dinkles (black marching shoes) with black socks OR white gym shoes with white socks. You'll be told which shoes/socks to wear prior to the event.

Rehearsal Uniforms: For the Monday and Wednesday night rehearsals, wear all black: Black pants or sweats, black long sleeve shirt or jacket, black socks and Dinkles.

LESSON 2: STUDENT LIFE

Student Handbook / Instrumental Music Manual: This manual has all the rules and regulations of participating in the Music program at Westview. It is available on the band website for reference/printing and will be distributed on the first day of school.

The "White Box": This box is mounted on the wall in the band room near the offices. Students will deposit permission slips, fair share payments, etc in this box. There are usually envelopes located next to the box for your use.

Student Accounts: Each student has an account that is maintained by the Treasurer and Student Account officer of the Band Boosters. When a student participates in a fundraiser and earns money, the money is deposited into that student's account to be used for fair share or for expenses associated with trips. A summary of the student accounts is posted near the White Box. Only students with money in their accounts will be printed on the summary. If the money in the account is not used by the student prior to graduating, the money will be deposited into the Band Booster account.

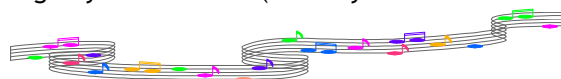
Fair Share Donation: See accompanying article in this newsletter—page 6.

Learning Point: You will go to this web site often!!! www.learningpoint.org By entering your user name and password, you can get to all your teachers' sites to keep current on assignments, announcements, and documents.

Practice Logs: Weekly practice logs are turned in every Tuesday in the box on the table by the offices (not the White Box) You will print the practice logs off of the Learning Point web site. The chart at the bottom of the practice log will show you how to earn the best grade for your practicing efforts.

On time/Late: If you're on time, you're late! Be EARLY to everything!

Lockers: Lockers in the band room will be assigned to the students for use of their band instruments and backpacks. A lock can be purchased at band camp. Do not bring in your own lock (unless you are a returning student and have your lock you purchased from us last year).



(cont. on page 5)

PARENTS! STUDENTS! MARCHING BAND FACTS 101: WHAT YOU NEED TO KNOW... (CONT. FROM PAGE 4)

Sue Downs

LESSON 2: STUDENT LIFE (cont.)

Student Leaders: See the Instrumental Music Handbook for a complete description on all the opportunities for students to assume leadership roles. Some of the positions are elected and some are appointed. The student leadership is broken down into 4 categories: Performance/Rehearsal Leaders, Section Leaders, Administrative Leaders and VP's

Section Coaches: Part time, paid staff members/professional musicians that coach the individual sections on music and marching technique

Lettering: Band students can earn a letter for participating in band and by participating in a variety of other band related events. Refer to the Student Handbook / Instrumental Music Manual for complete details !

LESSON 3: TOURNAMENTS, PARADES, PERFORMANCES

SCSBOA Festival: Southern California School Band & Orchestra Association

Parade Block: Westview will perform in 2 types of parades: those that do not get judged (Poway Days Parade) and those that do (Mt. Carmel Tournament, Mira Mesa Tournament). All students will be required to perform in the non-judged parades. Only those students who audition and are accepted into Parade Block will march in the judged parades. Information on Parade Block auditions will be available when school starts

Color Guard: Non-instrumental marching band students who play a vital role in adding color, drama and technique to the marching band performance. Usually 20-30 students who audition in the spring and practice all summer to perfect techniques in flags, rifle and dance. Color Guard makes all their own flags and designs costumes which complement the music selection for the field show/tournaments.

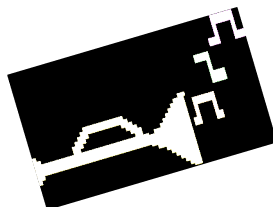


Field Show: Because of the intricate footwork and challenging music of today's marching bands, only one field show is selected and rehearsed for the whole marching season, but you will see it improve and get more involved each week. This is also the same show that will be performed at tournaments. Do not expect John Phillip Sousa music. The music in today's field shows have several movements and a lot of drama. This year's selection is an original score musically representing the children's book series "Harold And The Purple Crayon".

Tournaments: A tournament is a field show with judges. Westview will compete in several tournaments throughout the season. Tournaments held early on in the season are an opportunity for bands to come and perform their shows and be reviewed by SCSBOA judges. These shows may or may not include trophies. Tournaments are hosted by high schools and can have as many as 20+ schools competing on one day. Some tournaments are by invitation only and others are open to all. Based on the number of students in the band, the bands are assigned a level and, to be fair, will be judged against other schools of that same level. The judges will be located in the press box. and they will judge on several areas: uniforms, marching & sound. You may see or hear the judges talking into tape recorders. Points are assigned to each area, the points are added up and trophies are awarded at an awards ceremony following the tournament. The drum major and selected members represent each school at the awards ceremony. Each group has prepared a unique "salute" which they perform when their school is announced. This part is very fun to watch! Westview has the privilege of hosting a Tournament on October 07. This will be a big, all day tournament. This is also the parents' day to shine as a representative of Westview Gold. We ask each parent to sign up to help on that day to fulfill the 10 hour commitment required of each family.

Tournament Etiquette: The audience is requested not to talk or move to/from their seats during a performance. Also, bands will be seated on the "Visitors' side of the stadium and the audience will be seated on the "Home" side of the stadium. You will not sit with your band student (this is done to maintain order during the tournament, not because your student does not want to sit with you!)

We hope that you found this fun and informative. Hope to see you out there during this music season !



FAIR SHARE DONATIONS—WE CAN'T DO IT WITHOUT THEM**Jay Tillson**

As you know the Westview Gold music program is in the early building stages, and yet in four short years has achieved extraordinary success. This success is due in large part to the strong support and hard work of the students, faculty, parents and relatives. Parents have provided their time by volunteering as chaperones, drivers, concession stand operators, fundraiser event chairpersons, uniform outfitters, set and prop makers, just to mention a few.

While the Poway Unified School District funds all school programs equitably, outstanding high school music programs such as ours require additional capital that the school district cannot provide. This coming year the difference between our forecasted budget and the resources provided by the district is about \$110,000.

One of the primary methods of facilitating the music program is to ask each student family to make a Fair Share Contribution, both in the form of dollars and of their personal time in the form of volunteer hours. The following Fair Share Contributions for 2006-2007 were approved by the Booster Parents at the parent meeting held in May (note that financial contributions are tax deductible to the extent allowed by law, so please consult your tax advisor):

2006 - 2007 Fair Share Costs and Payment Dates

Please make the following minimum donation amounts by the following dates - **Make checks payable to "Westview Foundation" and deposit in the "white box" in the music room.**

Marching Band Students:

Total Fair Share Cost per student is \$495.00 for the Marching Season (Term 1) and Concert Season (Term 2)

\$195.00 Due **September 01, 2006**

\$150.00 Due **October 06, 2006**

\$150.00 Due **December 1, 2006**

Instrumental Ensemble Students & Orchestra Students:

Total Fair Share Cost per student for the Year: \$225.00

\$125.00 Due **October 15, 2006**

\$100.00 Due **November 15, 2006**

Color Guard:

Total Fair Share Cost per student for the Year: \$345.00

\$195.00 Due **September 01, 2006**

\$150.00 Due **October 06, 2006**

Please know that Westview is not unique in its request for fair share contributions. All four of Poway's high school music programs depend on the collection of contributions to fund their programs, and though Westview is a new program and has many start-up costs, **our requested fair share contribution amount is similar or smaller than the amounts requested by the other Poway high schools, even though we are still in the early building stages for our program.**

Your fair share contributions are but one vital component to the success of our program, now in its fifth year and growing. Without your support, the Westview Gold will be greatly diminished.

If you have any questions about the Fair Share Costs of your student or if there is a financial need, please contact Jennifer Wilson, Booster President at gwilson7@san.rr.com or (858) 484-1122 or Joseph Taulane, Booster Treasurer at jpt@chem.ucsd.edu.

Westview Foundation is a not-for-profit organization as described in section 501c (3) of the Internal Revenue Code.

Our taxpayer ID number is 03-0462131

Westview Foundation

13550 Camino Del Sur San Diego, California 92129

VOLUNTEERS & SENIORS—2006

Jennifer Wilson

Congratulations to the volunteers who were elected as Booster Officers and Chairpersons for our important committees at the May 17th Booster Parent Meeting. Your new Booster Officers are listed on page 11 of this newsletter.

We still have the following positions needing to be filled -

- Co-Pres/Pres Elect
- Historian
- Orchestra Liaison
- End of Year Banquet
- Winter Orchestra Concert
- Spring Band Concert
- Spring Orchestra Concert
- Spring Fundraiser
- Chaperones
- Equipment
- Publicity
- Advertising
- Fair Share Donations

Here's another great way to fulfill those Fair Share Volunteer Hours ! Contact a Booster Officer and join a great team of volunteers !



Congratulations to the following Seniors—Class of 2006

Yrs in Gold	Name	Member of
4	Shaun Adriano	MB, WE, ORCH, Tri-M
4	Andrew Bustamante	MB, WE, ORCH, Tri-M
4	Wynne Chyou	ORCH, Tri-M
4	Casey Colombino	MB, CB
4	Rachael Fennell	DM, MB, CG, ORCH
4	Michael Gibson	MB, WE
4	Rachel Goossens	MB WE, IMP, Tri-M
4	Myra Gordon	MB, IMP
4	Maria Grill	MB, CB
4	Breanna Hath	MB, WE, ORCH
4	Alex Horwitz	IE, WE, ORCH
4	Tarina Lee	MB, WE, ORCH
4	Michael Liu	MB, WE
4	Luis Lopez	MB, WE, ORCH, IMP
4	Shubhanga Mani	ORCH
4	Alisha Peterson	CG
4	Matthew Salzetti	MB, CB, IMP
4	Sumit Shah	ORCH
4	Laura Smith	CG, MB
3	Kaitlyn Sobotka	CG
4	Joseph Taulane	MB, WE
4	Allison Underwood	MB, WE, ORCH
4	Arleen Villafania	MB, CB
4	Ken Wakabayashi	MB, WE
4	Jennifer Ward	MB, WE, ORCH, Tri-M
4	Maren Wight	MB, IE, WE
4	Stephanie Wilson	MB, WE, ORCH, IMP, Tri-M
4	Branden Yeo	ORCH, Tri-M
1	Paul Yoon	ORCH, IMP

A SPECIAL WESTVIEW SHOUT OUT TO:

- ♪ We are SEW happy to give THANKS to Sue Downs & her incredible team— Carol Farrell, Valerie Moller, Katsie Cresto, Nancy Ayers, Linda Siler, Betsy Goff, Chris Schumann, Trinh Doan, Gail Skoglund, Vonnie Warrick, Judy Banh, Barbara Alvarez, Flora Biglaryan, Patty Carte, Cris Carillo, Belle Chu, Karlene Blackburn, Dao Abramson, for their tireless efforts with uniform fittings & ensuring that our Gold has their dancing (marching) shoes on !
- ♪ A grocery cart full of kudos to Wendy Mukai, Terry Duncan, Tina Mata & Casey Firestone for ensuring that the students have a good meal & snacks during band camp. Additional kudos to all the Parent Volunteers who give up their time to staff the food and snack tables! A big hand to Laura Gamelson for keeping the registration process organized.
- ♪ Hammer together a trophy for David Haigh & Dale Bryan for stepping forward as BAND DAD captains.
- ♪ Shopping awards to Casey Firestone for coordinating the polo shirts, locks, bags and jackets. It was great having our very own Westview Gold store right in the band room!
- ♪ These amazing students— Lauren Downs, Camille Zaba, Daniel Wang, Alex Pene, Adruanne Domingo, Jennica Vargas, Crystal Doan, Emily Meike, Deilia Lee, Tiffany Firestone, Briana Lam, Briana Davis, Ana Lopez, Jonathon Brubaker & Keri Downs gave up their free time to assist with uniform fittings. Standing Ovation to all of you !



HEY BUDDY—DO ‘YA DRIVE A TRUCK ?**Joseph Taulane**

Many of us that own trucks find that we have more “friends” than we would if all we drove was a sedan. I have about 200 students and a bunch of parents that are ready to be your friends, and all you need to do is a little driving. I’ll even buy the fuel. And if we hold one, we will wash your truck for free at any of our band car wash events. Such a Deal!

The Marching Band, the Color Guard, the Boosters, Miss Webb, and the “BAND DADS” need your help. We have a brand new 20 ft. trailer which we will use to transport uniforms and equipment for our marching band performances. We must find a few families in the program that have a truck or SUV that would be willing to tow the trailer. The trailer has dual axles, electric brakes, and comes wired with a universal 7 pin round connector. The curb weight is about 3000 pounds. The trailer is owned and insured by the Poway Unified School District. If you have a 1999 or newer truck, it should be pre-wired for this system. All you need is a tow bar receiver and we are good to go. Please check your dates and see if you can help us.

The schedule is:

10/14 – Poway	10/28 – MCHS
11/4 - Mira Mesa	11/11 – Vista
11/18–Arcadia	

If you can help please contact me, Joseph Taulane at jtaulane@ucsd.edu, 484-8813.
Don’t wait for the other guy to do it, call now!

**SECTION PARENTS & LIAISONS—THE “GO-TO” PEOPLE****Patty Carte**

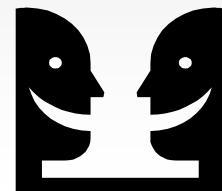
Over the past four years, the parent liaisons to the orchestra, instrumental ensemble and color guard have provided an invaluable communication and planning link with the parents. Using the liaisons as a model, the Booster Board have recruited parents from each of the instrument sections in the Marching Band to perform a similar communication and planning function. These Section Parents will be the “go to” folks - they will be able to answer your questions or, at least, point you in the right direction

Please welcome our Section Parents and Liaisons for the coming year!

Marching Band Sections:

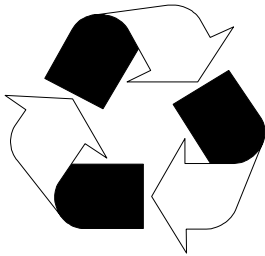
Flutes:	Tina Mata (538-1648) Rebecah Moya (538-6831)
Clarinets:	Judith Garces (538-6356) Janet Pitcher (780-1757)
Saxophones:	Craig Troeller (484-6694) Kappi Farrow (484-6720)
French Horn	Karlene Blackburn (484-0154)
Trumpets:	Lori Hill (484-3568)
Trombones:	Melody Stewart (484-8226)
Euphoniums	Patty Carte (538-3436)
Tubas:	Linda Siler (538-6810)
Percussion:	Laurie Horne (756-8933) Sue Downs (484-4204)

Color Guard Liaison: Laura Peterson (484-0938)



RECYCLING MAKES MONEY AND SENSE TOO !

Kathy Gima



Thanks to all of you who continue to support our cartridge/cell phone recycling program. Westview Gold receives **cash** for every cartridge or cell phone turned in. Not only that, this program helps keep these items out of the landfills.

Individual mailers are available in the band room. Bulk recycling of laser cartridges is also available. **We especially need businesses to help us out** by using our collection boxes. If you know of a business that can help, please contact Kathy Gima at kgima@san.rr.com or 538-9029.

Also, if there is a parent volunteer who would like to help monitor/coordinate this program, please give me a call—it's a great way to fulfill your Volunteer Hours commitment !

STUDENT ACCOUNTS

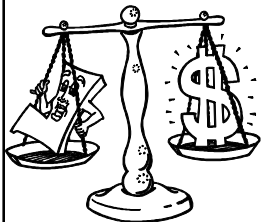
Kathy Gima

The Student Account list has been posted on the wall above the "White Box" in the Band Room. Only students with positive accounts are listed. The money in their individual accounts show balances from previous years in Westview Gold as well as from our first three fundraising events this school year which were Discount Cards, Entertainment Books and Poinsettia Sales.

"Student Accounts" provides each student an opportunity to earn funds to help defray musical expenses such as Fair Share Donations, uniforms (shirt, marching shoes, etc.), music lessons, music supplies, and banquet fees to name a few.

Fundraising activities are announced and a certain pre-determined percentage (decided by the Westview Gold Board Members) can be earned by the student and deposited into their account. The amount earned is accumulated for the duration of each student's academic career while in the Westview Gold program (marching band, concert band, orchestra, instrumental ensemble, color/winter guard).

In order for a student to withdraw funds from his/her Student Account, the student must completely fill out a Student Withdrawal Request Form which is located on the Westview Gold website. Only music-related expenses will be approved. All Fair Share Donations and other financial obligations must be taken care of prior to requesting funds for optional items. Required approval signatures include Parent/Guardian, Miss Webb, and the Band Booster Treasurer.



For any questions, please contact Mary Young at (858) 484-8662 or at westviewgsa@gmail.com

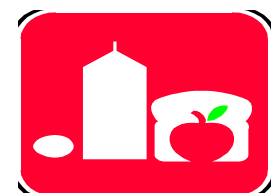
THANK YOU TO ALL OUR VOLUNTEERS !!
TOGETHER, WE'RE BUILDING THE FUTURE !!

NO EFFORT (ALMOST) FUNDRAISING

Albertson's has a Community Partners Program where they will give Westview Gold a percentage of what you spend at Albertson's. To register, sign up for a Preferred Savings Card from Albertson's. After you have your card, do the following:

- 1) Go to www.Albertsons.com.
- 2) 2) Click "in the Community".
- 3) 3) Click "Community Partners.
- 4) 4) Click "Shoppers: login or register with your Preferred Savings Card first".
- 5) 5) Enter card # and phone #.
- 6) 6) Click "find a Partner.
- 7) 7) Name = Westview; city = San Diego; state = California.
- 8) 8) Select the pop-up match of "Westview Gold Boosters" and add.

So, let's all register and help Westview Gold grow as we shop at Alberson's !



Who's Who

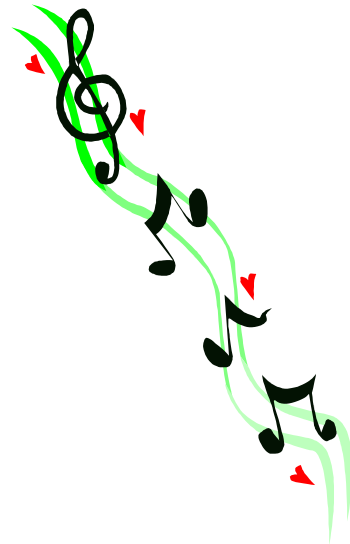
Director	Jeri Webb	780-2000 X3262
Music Assistant	Sam Williams	780-2000 X3242

Coaching Staff (All area codes 858 unless noted)

Flute	Marion Garver Fredrickson	638-0135
Clarinet	Geoff Radant	(619) 742-0448
Saxophone	Sam Williams	357-3637
French Horn	Alan Grant	354-0618
Trumpet	Andrew Compton	(760) 745-2996
Trombone	Keith Almanza	692-5697
Low Brass	Jim Rogers	(502) 641-3922
Percussion	Michael Atesalp	(619) 318-DRUM
Mallets	Tollak Rafto	(760) 703-5910
Orchestra—Viola	Alyze Dreilling-Hammer	592-9790
Violin	Lorraine Collard	484-7421
Cello	Steve Garrett	(619) 461-8978
Bass	Joe McNally	(760) 632-6829
Marching	Geoff Radant	(619) 742-0448
	Jillian Rusk	(949) 394-9676
	Jim Rogers	(502) 641-3922
	Jason de la Cuadra	(619) 993-9534
Color Guard	Louie Flores	(619) 948-1388
	Janelle Yuen	(510) 673-5212

Booster Team

President	Jennifer Wilson	484-1122
Co VP Events & Activities	Laura Scheid	538-0376
Co VP Events & Activities	Cherilyn Browne	538-0207
VP Ways & Means	Jay Tillson	484-4244
VP Volunteers	Patty Carte	538-3436
VP Communications	Kathy Gima	538-9029
Recording Sec.	Alane Bollenbacher	538-9079
Corresponding Sec.	Chris Meike	484-4420
Treasurer	Joseph Taulane	484-8813
Asst. Treasurer	Fran Taulane	484-8813
Auditor	Stan Blackburn	484-0154
Student Accounts	Mary Young	484-8662
Color Guard Liason	Laura Peterson	484-0938
Instrumental Ensemble	Gloria Lew	484-1693
Historian	Colleen Salzetti	538-9096
Parliamentarian	Cathy Merrow	484-0864
Booster Membership	Jane Colombino	538-7734
Uniform Manager	Sue Downs	484-4204
Fall Field Tournament	Cathy Merrow	484-0864
	Kathy Gima	538-9029
Solo & Ensemble Festival	Sue Downs	484-4204
	Wendy Mukai	484-1810
Newsletter	Kathy Gima	538-9029
Restaurant Nights & Entertainment Books	Cindy Tentschert	672-1839
Webmaster	Stan Skoglund	484-4599
E-mails	Jennifer Wilson	484-1122
Yearly Calendar	Karlene Blackburn	484-0154



Booster Team—(cont.)

Poinsettia Sales	Michelle Arnett	484-1836
Booster Membership	Belle Chu	538-9488
Band Camp	Wendy Mukai	484-1810
Band Camp Reg.	Laura Gamelson	538-9902
Winter Band Concert	Melody Stewart	484-8226
National Scrip	Linda Siler	538-6810
E-scrip	Valerie Dunham	484-1914
Merchandising	Wendy Mukai	484-1810
	Casey Firestone	538-1607
Football Games	Cris Carrillo	538-7964
Band Dad Chiefs	David Haigh	484-8677
	Dale Bryan	538-1046
Publications	Tina Mata	538-1648

Do you have any questions or topics that you would like to be addressed in future issues? Please send me an email at kgima@san.rr.com or call Kathy Gima at (858) 538-9029.

I'll pass your request on to one of our excellent board members and publish the answers in a future newsletter.

THE WESTVIEW GOLD TONE

A PUBLICATION OF THE WESTVIEW INSTRUMENTAL
MUSIC BOOSTERS

WESTVIEW HIGH SCHOOL
13500 CAMINO DEL SUR
SAN DIEGO, CA 92129
(858) 780-2000

Important Dates

September 1 (Friday) - 1st Fair Share Payment Due. All Day. White Box, Band Room

September 6 (Wednesday) - Rehearsal. 6pm—9pm. Stadium

September 8 (Friday) - Football game. 6pm call time. Band Room

September 11 (Monday) - Rehearsal. 6pm—9pm. Stadium

September 13 (Wednesday) - Rehearsal. 6pm—9pm. Stadium

September 16 (Saturday) - Poway Days Parade. start—TBD. Poway.

September 18 (Monday) - Rehearsal. 6pm—9pm. Stadium.

September 20 (Wednesday) - Rehearsal. 6pm—9pm. Stadium.

September 21 (Thursday) - Football game. 6pm call time. Band Room

September 27 (Wednesday) - Rehearsal. 6pm—9pm. Stadium

September 30 (Saturday) - Rehearse-a-thon. 9am—6pm. Band Room.

October 4 (Wednesday) - Rehearsal. 6pm—9pm. Stadium.

October 6 (Friday) - Football game. 6pm call time. Band Room

October 7 (Saturday) - Westview Review. All Day. Stadium.